

ISSN 2518-170X (Online),
ISSN 2224-5278 (Print)

ҚАЗАҚСТАН РЕСПУБЛИКАСЫ
ҰЛТТЫҚ ҒЫЛЫМ АКАДЕМИЯСЫ
Satbayev University

Х А Б А Р Л А Р Ы

ИЗВЕСТИЯ

НАЦИОНАЛЬНОЙ АКАДЕМИИ НАУК
РЕСПУБЛИКИ КАЗАХСТАН
Satbayev University

N E W S

OF THE ACADEMY OF SCIENCES
OF THE REPUBLIC OF KAZAKHSTAN
Satbayev University

**SERIES
OF GEOLOGY AND TECHNICAL SCIENCES**

4 (448)

JULY – AUGUST 2021

THE JOURNAL WAS FOUNDED IN 1940

PUBLISHED 6 TIMES A YEAR

ALMATY, NAS RK

NAS RK is pleased to announce that News of NAS RK. Series of geology and technical sciences scientific journal has been accepted for indexing in the Emerging Sources Citation Index, a new edition of Web of Science. Content in this index is under consideration by Clarivate Analytics to be accepted in the Science Citation Index Expanded, the Social Sciences Citation Index, and the Arts & Humanities Citation Index. The quality and depth of content Web of Science offers to researchers, authors, publishers, and institutions sets it apart from other research databases. The inclusion of News of NAS RK. Series of geology and technical sciences in the Emerging Sources Citation Index demonstrates our dedication to providing the most relevant and influential content of geology and engineering sciences to our community.

Қазақстан Республикасы Ұлттық ғылым академиясы «ҚР ҰҒА Хабарлары. Геология және техникалық ғылымдар сериясы» ғылыми журналының Web of Science-тің жаңаланған нұсқасы Emerging Sources Citation Index-те индекстелуге қабылданғанын хабарлайды. Бұл индекстелу барысында Clarivate Analytics компаниясы журналды одан әрі the Science Citation Index Expanded, the Social Sciences Citation Index және the Arts & Humanities Citation Index-ке қабылдау мәселесін қарастыруда. Web of Science зерттеушілер, авторлар, баспашылар мен мекемелерге контент тереңдігі мен сапасын ұсынады. ҚР ҰҒА Хабарлары. Геология және техникалық ғылымдар сериясы Emerging Sources Citation Index-ке енуі біздің қоғамдастық үшін ең өзекті және беделді геология және техникалық ғылымдар бойынша контентке адалдығымызды білдіреді.

НАН РК сообщает, что научный журнал «Известия НАН РК. Серия геологии и технических наук» был принят для индексирования в Emerging Sources Citation Index, обновленной версии Web of Science. Содержание в этом индексировании находится в стадии рассмотрения компанией Clarivate Analytics для дальнейшего принятия журнала в the Science Citation Index Expanded, the Social Sciences Citation Index и the Arts & Humanities Citation Index. Web of Science предлагает качество и глубину контента для исследователей, авторов, издателей и учреждений. Включение Известия НАН РК. Серия геологии и технических наук в Emerging Sources Citation Index демонстрирует нашу приверженность к наиболее актуальному и влиятельному контенту по геологии и техническим наукам для нашего сообщества.

Бас редактор

ЖҰРЫНОВ Мұрат Жұрынұлы, химия ғылымдарының докторы, профессор, ҚР ҰҒА академигі, Қазақстан Республикасы Ұлттық Ғылым академиясының президенті, АҚ «Д.В. Сокольский атындағы отын, катализ және электрохимия институтының» бас директоры (Алматы, Қазақстан) Н = 4

Редакциялық алқа:

ӘБСАМЕТОВ Мәліс Құдысұлы (бас редактордың орынбасары), геология-минералогия ғылымдарының докторы, профессор, ҚР ҰҒА академигі, «У.М. Ахмедсафина атындағы гидрогеология және геоэкология институтының» директоры (Алматы, Қазақстан) Н = 2

ЖОЛТАЕВ Герой Жолтайұлы (бас редактордың орынбасары), геология-минералогия ғылымдарының докторы, профессор, Қ.И. Сатпаев атындағы геология ғылымдары институтының директоры (Алматы, Қазақстан) Н=2

СНОУ Дэниел, Ph.D, қауымдастырылған профессор, Небраска университетінің Су ғылымдары зертханасының директоры (Небраска штаты, АҚШ) Н = 32

ЗЕЛЬТМАН Реймар, Ph.D, табиғи тарих мұражайының Жер туралы ғылымдар бөлімінде петрология және пайдалы қазбалар кен орындары саласындағы зерттеулердің жетекшісі (Лондон, Англия) Н = 37

ПАНФИЛОВ Михаил Борисович, техника ғылымдарының докторы, Нанси университетінің профессоры (Нанси, Франция) Н=15

ШЕН Пин, Ph.D, Қытай геологиялық қоғамының тау геологиясы комитеті директорының орынбасары, Американдық экономикалық геологтар қауымдастығының мүшесі (Пекин, Қытай) Н = 25

ФИШЕР Аксель, Ph.D, Дрезден техникалық университетінің қауымдастырылған профессоры (Дрезден, Берлин) Н = 6

КОНТОРОВИЧ Алексей Эмильевич, геология-минералогия ғылымдарының докторы, профессор, РФА академигі, А.А. Трофимука атындағы мұнай-газ геологиясы және геофизика институты (Новосибирск, Ресей) Н = 19

АБСАДЫКОВ Бахыт Нарикбайұлы, техника ғылымдарының докторы, профессор, ҚР ҰҒА корреспондент-мүшесі, А.Б. Бектұров атындағы химия ғылымдары институты (Алматы, Қазақстан) Н = 5

АГАБЕКОВ Владимир Енокович, химия ғылымдарының докторы, Беларусь ҰҒА академигі, Жаңа материалдар химиясы институтының құрметті директоры (Минск, Беларусь) Н = 13

КАТАЛИН Стефан, Ph.D, Дрезден техникалық университетінің қауымдастырылған профессоры (Дрезден, Берлин) Н = 20

СЕЙТМҰРАТОВА Элеонора Юсуповна, геология-минералогия ғылымдарының докторы, профессор, ҚР ҰҒА корреспондент-мүшесі, Қ.И. Сатпаев атындағы Геология ғылымдары институты зертханасының меңгерушісі (Алматы, Қазақстан) Н=11

САҒЫНТАЕВ Жанай, Ph.D, қауымдастырылған профессор, Назарбаев университеті (Нұр-Сұлтан, Қазақстан) Н = 11

ФРАТТИНИ Паоло, Ph.D, Бикокк Милан университеті қауымдастырылған профессоры (Милан, Италия) Н = 28

«ҚР ҰҒА Хабарлары. Геология және техникалық ғылымдар сериясы».

ISSN 2518-170X (Online),

ISSN 2224-5278 (Print)

Меншіктеуші: «Қазақстан Республикасының Ұлттық ғылым академиясы» РҚБ (Алматы қ.).

Қазақстан Республикасының Ақпарат және қоғамдық даму министрлігінің Ақпарат комитетінде 29.07.2020 ж. берілген № KZ39VPY00025420 мерзімдік басылым тіркеуіне қойылу туралы куәлік.

Тақырыптық бағыты: *геология, мұнай және газды өңдеудің химиялық технологиялары, мұнай химиясы, металдарды алу және олардың қосындыларының технологиясы.*

Мерзімділігі: жылына 6 рет.

Тиражы: 300 дана.

Редакцияның мекен-жайы: 050010, Алматы қ., Шевченко көш., 28, 219 бөл., тел.: 272-13-19

<http://www.geolog-technical.kz/index.php/en/>

© Қазақстан Республикасының Ұлттық ғылым академиясы, 2021

Типографияның мекен-жайы: «Аруна» ЖК, Алматы қ., Мұратбаев көш., 75.

Главный редактор

ЖУРИНОВ Мурат Журинович, доктор химических наук, профессор, академик НАН РК, президент Национальной академии наук Республики Казахстан, генеральный директор АО «Институт топлива, катализа и электрохимии им. Д.В. Сокольского» (Алматы, Казахстан) Н = 4

Редакционная коллегия:

АБСАМЕТОВ Малис Кудысович, (заместитель главного редактора), доктор геолого-минералогических наук, профессор, академик НАН РК, директор Института гидрогеологии и геоэкологии им. У.М. Ахмедсафина (Алматы, Казахстан) Н = 2

ЖОЛТАЕВ Герой Жолтаевич, (заместитель главного редактора), доктор геолого-минералогических наук, профессор, директор Института геологических наук им. К.И.Сатпаева (Алматы, Казахстан) Н=2

СНОУ Дэниел, Ph.D, ассоциированный профессор, директор Лаборатории водных наук университета Небраски (штат Небраска, США) Н = 32

ЗЕЛЬТМАН Реймар, Ph.D, руководитель исследований в области петрологии и месторождений полезных ископаемых в Отделе наук о Земле Музея естественной истории (Лондон, Англия) Н = 37

ПАНФИЛОВ Михаил Борисович, доктор технических наук, профессор Университета Нанси (Нанси, Франция) Н=15

ШЕН Пин, Ph.D, заместитель директора Комитета по горной геологии Китайского геологического общества, член Американской ассоциации экономических геологов (Пекин, Китай) Н = 25

ФИШЕР Аксель, ассоциированный профессор, Ph.D, технический университет Дрезден (Дрезден, Берлин) Н = 6

КОНТОРОВИЧ Алексей Эмильевич, доктор геолого-минералогических наук, профессор, академик РАН, Институт нефтегазовой геологии и геофизики им. А.А. Трофимука СО РАН (Новосибирск, Россия) Н = 19

АБСАДЫКОВ Бахыт Нарикбаевич, доктор технических наук, профессор, член-корреспондент НАН РК, Институт химических наук им. А.Б. Бектурова (Алматы, Казахстан) Н = 5

АГАБЕКОВ Владимир Енокович, доктор химических наук, академик НАН Беларуси, почетный директор Института химии новых материалов (Минск, Беларусь) Н = 13

КАТАЛИН Стефан, Ph.D, ассоциированный профессор, Технический университет (Дрезден, Берлин) Н = 20

СЕЙТМУРАТОВА Элеонора Юсуповна, доктор геолого-минералогических наук, профессор, член-корреспондент НАН РК, заведующая лабораторией Института геологических наук им. К.И. Сатпаева (Алматы, Казахстан) Н=11

САГИНТАЕВ Жанай, Ph.D, ассоциированный профессор, Назарбаев университет (Нурсултан, Казахстан) Н = 11

ФРАТТИНИ Паоло, Ph.D, ассоциированный профессор, Миланский университет Бикокк (Милан, Италия) Н = 28

«Известия НАН РК. Серия геологии и технических наук».

ISSN 2518-170X (Online),

ISSN 2224-5278 (Print)

Собственник: Республиканское общественное объединение «Национальная академия наук Республики Казахстан» (г. Алматы).

Свидетельство о постановке на учет периодического печатного издания в Комитете информации Министерства информации и общественного развития Республики Казахстан № KZ39VPY00025420, выданное 29.07.2020 г.

Тематическая направленность: *геология, химические технологии переработки нефти и газа, нефтехимия, технологии извлечения металлов и их соединений.*

Периодичность: 6 раз в год.

Тираж: 300 экземпляров.

Адрес редакции: 050010, г. Алматы, ул. Шевченко, 28, оф. 219, тел.: 272-13-19

<http://www.geolog-technical.kz/index.php/en/>

© Национальная академия наук Республики Казахстан, 2021

Адрес типографии: ИП «Аруна», г. Алматы, ул. Муратбаева, 75.

Editor in chief

ZHURINOV Murat Zhurinovich, doctor of chemistry, professor, academician of NAS RK, president of the National Academy of Sciences of the Republic of Kazakhstan, general director of JSC “Institute of fuel, catalysis and electrochemistry named after D.V. Sokolsky» (Almaty, Kazakhstan) H = 4

Editorial board:

ABSAMETOV Malis Kudysovich, (deputy editor-in-chief), doctor of geological and mineralogical sciences, professor, academician of NAS RK, director of the Akhmedsafin Institute of hydrogeology and hydrophysics (Almaty, Kazakhstan) H = 2

ZHOLTAEV Geroy Zholtaevich, (deputy editor-in-chief), doctor of geological and mineralogical sciences, professor, director of the institute of geological sciences named after K.I. Satpayev (Almaty, Kazakhstan) H=2

SNOW Daniel, Ph.D, associate professor, director of the laboratory of water sciences, Nebraska University (Nebraska, USA) H = 32

Zeltman Reymar, Ph.D, head of research department in petrology and mineral deposits in the Earth sciences section of the museum of natural history (London, England) H = 37

PANFILOV Mikhail Borisovich, doctor of technical sciences, professor at the Nancy University (Nancy, France) H=15

SHEN Ping, Ph.D, deputy director of the Committee for Mining geology of the China geological Society, Fellow of the American association of economic geologists (Beijing, China) H = 25

FISCHER Axel, Ph.D, associate professor, Dresden University of technology (Dresden, Germany) H = 6

KONTOROVICH Aleksey Emilievich, doctor of geological and mineralogical sciences, professor, academician of RAS, Trofimuk Institute of petroleum geology and geophysics SB RAS (Novosibirsk, Russia) H = 19

ABSADYKOV Bakhyt Narikbaevich, doctor of technical sciences, professor, corresponding member of NAS RK, Bekturov Institute of chemical sciences (Almaty, Kazakhstan) H = 5

AGABEKOV Vladimir Enokovich, doctor of chemistry, academician of NAS of Belarus, honorary director of the Institute of chemistry of new materials (Minsk, Belarus) H = 13

KATALIN Stephan, Ph.D, associate professor, Technical university (Dresden, Berlin) H = 20

SEITMURATOVA Eleonora Yusupovna, doctor of geological and mineralogical sciences, professor, corresponding member of NAS RK, head of the laboratory of the Institute of geological sciences named after K.I. Satpayev (Almaty, Kazakhstan) H=11

SAGINTAYEV Zhanay, Ph.D, associate professor, Nazarbayev University (Nursultan, Kazakhstan) H = 11

FRATTINI Paolo, Ph.D, associate professor, university of Milano-Bicocca (Milan, Italy) H = 28

News of the National Academy of Sciences of the Republic of Kazakhstan. Series of geology and technology sciences.

ISSN 2518-170X (Online),

ISSN 2224-5278 (Print)

Owner: RPA «National Academy of Sciences of the Republic of Kazakhstan» (Almaty).

The certificate of registration of a periodical printed publication in the Committee of information of the Ministry of Information and Social Development of the Republic of Kazakhstan **No. KZ39VPY00025420**, issued 29.07.2020.

Thematic scope: *geology, chemical technologies for oil and gas processing, petrochemistry, technologies for extracting metals and their connections.*

Periodicity: 6 times a year.

Circulation: 300 copies.

Editorial address: 28, Shevchenko str., of. 219, Almaty, 050010, tel. 272-13-19

<http://www.geolog-technical.kz/index.php/en/>

© National Academy of Sciences of the Republic of Kazakhstan, 2021

Address of printing house: ST «Aruna», 75, Muratbayev str, Almaty.

NEWS

OF THE NATIONAL ACADEMY OF SCIENCES OF THE REPUBLIC OF KAZAKHSTAN

SERIES OF GEOLOGY AND TECHNICAL SCIENCES

ISSN 2224-5278

Volume 4, Number 448 (2021), 66-75

<https://doi.org/10.32014/2021.2518-170X.83>

Nur Qudus^{1*}, Feddy Setio Pribadi², Mohamed Nor Azhari Azman³

¹Department of Civil Engineering, Universitas Negeri Semarang, Indonesia;

²Department of Electrical Engineering, Universitas Negeri Semarang, Indonesia;

³Faculty of Technical and Vocational, Universiti Pendidikan Sultan Idris, Tanjong Malim, Perak, Malaysia.

E-mail: nurqudus@mail.unnes.ac.id

**IMPLEMENTATION OF THE AHP METHOD TO DETERMINE THE
PRIORITY OF RECHARGE AREAS IN THE SEMARANG CITY**

Abstract: the selection of a certain region as an area for groundwater recharge requires priority on the development of a region. Groundwater recharge area has an important role in maintaining a clean water supply in an urban area. One of the impacts of the environmental damage is the damage to the potential for groundwater supplies. This environmental damage is caused by changes in land use, especially in areas of groundwater recharge, residential and industrial development as well as uncontrolled pumping of groundwater. If this happens for a long period, it can disrupt the hydrological cycle system which results in decreased quality and quantity of groundwater, flood, erosion and landslides, and seawater intrusion. Therefore, the selection of a certain region as an area for groundwater recharge requires priority on the development of a region. Groundwater recharge area has an important role in maintaining a clean water supply in an urban area. The urban area is an area that experiences rapid development, especially changes in land use that have turned into residential and industrial areas. In this discussion, the method of the Analytical Hierarchy Process (AHP) was used to determine the priority scale of the catchment area development in the city of Semarang. The AHP method was used to analyze data that has a variety of dimensions simultaneously so that it is based on the data contained in the variables used in identifying the area. The results of the analysis can produce 10 priority areas for groundwater recharge and their ranking which can be developed gradually as catchment areas in the city of Semarang.

Key word: AHP method, water recharge area, priority scale, ranking.

Introduction. One of the impacts of the environmental damage is the damage to the potential for groundwater supplies. This environmental damage is caused by changes in land use, especially in areas of groundwater recharge, residential and industrial development as well as uncontrolled pumping of groundwater [1]. If this happens for a long period, it can disrupt the hydrological cycle system which results in decreased quality and quantity of groundwater, flood, erosion and landslides and seawater intrusion. Several studies have been conducted to maintain groundwater supplies, including by building wells and infiltration trenches [1,2], and groundwater recharge areas [3, 4, 5, 6].

The selection of an area to become a groundwater recharge area has been carried out in previous studies. The methods of the selection can be grouped into three. The first method is by using analysis on geospatial data [3, 5, 7, 19,

20]. The second one is by using Analytical Hierarchy Process (AHP) [2, 4, 8].

The third is by involving artificial intelligence methods [9, 10]. Application of AHP has special characteristics as compared with the other two methods which are the results are not only the selection of an area as a groundwater recharge area but also simultaneously show the order of priority of the areas were classified as eligible. The AHP method also considers that each parameter that affects the feasibility of a groundwater recharge area has a different weight.

The selection of the priority scale becomes important to determine the groundwater recharge area in urban area as Semarang city, the capital of Central Java province. Urban areas tend to have limited open space and a high population density and high level of residential and industrial development. Several studies have been conducted to identify groundwater recharge areas in the city of Semarang, including studies conducted by [1, 6]. However, those identified areas have changed for

their land use. Seeing the existing potential, these areas still have the potential to become a groundwater recharge area by implementing the right technology such as infiltration ditches or infiltration wells [1].

In contrast to previous studies, the study aims to map groundwater recharge areas involving the geographical data, the geological data, and observation results on the readiness of the community on the groundwater recharge area. The problem of Semarang city is that this area has high population density, and almost all areas are residential areas. Some of the open areas one day are transformed into a residential area. The solution to the problem offered in this article is the AHP method. The AHP method was used in this article because there are two kinds of data, the first data consisted of geological and geographic data, the second data was questionnaire data.

The issue raised in this article is how to determine priorities on twenty-eight groundwater recharge areas which have been determined by previous studies [1]. This priority scale of this article assists policy makers in planning regional development, especially in the city of Semarang.

Research related to the selection of groundwater recharge areas has been carried out by many researchers. Osipov et al [16] investigated changes in the groundwater formation in Kazakhstan. This study found that the groundwater in Kazakhstan is influenced by several factors such as natural factors, climate, the geological structure, and the human activities. Previous study by Murtazin, Miroshnichenko, Trushel [17] built the system of information on "Groundwater resources and reserves of the Republic of Kazakhstan". The system consists of the document database, the graphic and semantic database. It aims to assist the evaluation of groundwater resources and reserves, and it can be endorsed for creation of the system for geoinformation and analysis of groundwater resources and reserves in Kazakhstan. Murtazin et al [18] continued his study by creating computer models of groundwater resources maps in Kazakhstan which involves the geographic information system and inputting in the graphic database. The data from GIS, remote sensing or field measurement data were used in this present study. Through reference studies that have been carried out by the authors, these researchers used a variety of variables in determining which areas are suitable for use as groundwater recharge areas. Deeksha [12] uses variables taken from GIS data such as geological maps, drainage maps, land use maps, soil texture maps, and area maps. Other researchers used data from evaporation, cost benefit, sediment, hydrology (rainfall

frequency) [13]. Raviraj [14] uses data from GIS and remote sensing, the variables included maps of climate, geology, lineament, drainage density, geomorphology, slope, land use, and soils.

In the process of selecting a decision as to specify an area to be used as a groundwater recharge area can be determined by using technical data such as spatial data and could also consider non-technical issues [1]. AHP implementation method in the selection of the groundwater recharge areas by some researchers makes possible to involve non-physical data taken from the questionnaire. The data from the questionnaire from the AHP method can result in priority to an area that can be used as a groundwater recharge zone. Several studies on the selection of the groundwater recharge zones by applying the AHP method in the city of Semarang and its surrounding area are carried out by [2] [6] [8]. The research conducted by Saud [2] used the AHP method to determine the best alternative in dealing with floods in the city of Surabaya. Anjasmoro et al. [6] implemented AHP method to determine priorities for the development of reservoirs in the city of Semarang as an effort to control floods.

The AHP method is one of the methods used to assist to make a decision, especially in making choices from a number of available alternatives [11]. The emphasis of the AHP method is being able to provide solutions in determining options using an analytical approach. The researchers implemented different weight on variables used to determine groundwater recharge zones. The process of determining the weights of these variables was carried out by involving experts [14].

The research as outlined in the study aims to implement the AHP method to determine the development priority of groundwater recharge zones at the city of Semarang. In contrast to previous research, this study used two groups of variables, the first group of variables consists of five variables defined in Regulation of Ministry of Public Works PU No. 02/2013 concerning Guidelines for Preparation of Water Resources Management Plans. The second group consists of two non-technical variables for example the data on perception and knowledge related community development on the groundwater recharge areas on their territory. The technical and non-technical variables used in selecting the groundwater zone using the AHP method are expected to provide an expected description of the development of the groundwater zone priorities in the city of Semarang.

Research Methods. This research implemented the AHP method to determine the priority in

groundwater recharge area at the residential area at Semarang city. AHP Method is suitable to assist the priority of the alternatives. Figure 1 shows a block diagram of the application of AHP in setting the priority on groundwater recharge area that have been identified in the city of Semarang.

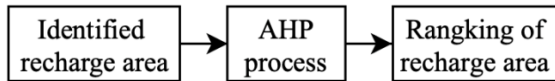


Figure 1. Block Diagram of AHP Implementation

As depicted in Figure 1, the AHP method was used to set the priority on the area that became the main priority for the development of groundwater recharge areas. In detail, the process of selecting the priority scale of groundwater recharge areas using the AHP method is shown in Figure 2.

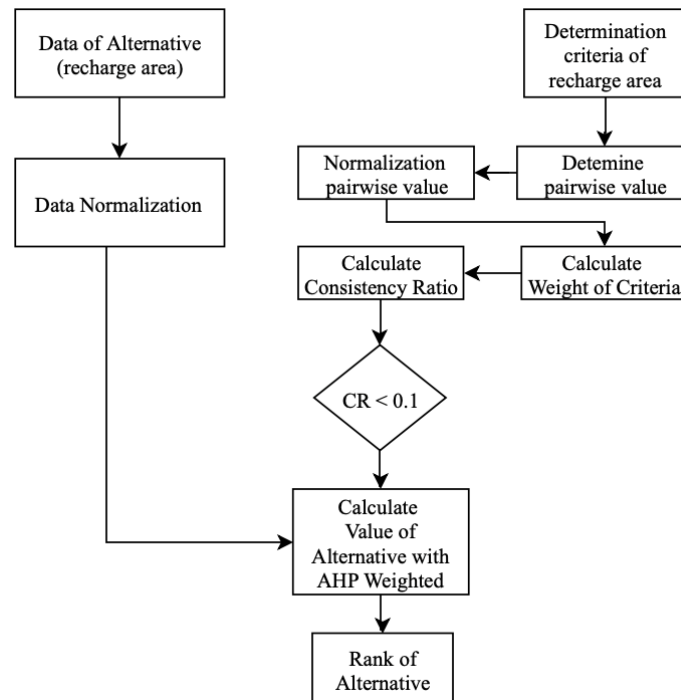


Figure 2. The Priority Scale Selection of Groundwater Recharge Areas by AHP

Figure 2 shows that the selection of the priority scale of groundwater recharge areas begins with determining the criteria and gathering the data for these criteria in a region that deserves to be a groundwater recharge area. This research used the advantage of AHP to calculate using different data forms simultaneously. As an illustration, the value of the slope (slope) uses the percentage size, the ground water level (water level) uses the millimetres, and population density uses the thousands.

The next step after determining the criteria was to determine the weight of each of these criteria. In AHP, process weighting the criteria has several stages that calculate the pairwise comparison matrix, calculate Consistency Index (CI) and finally calculate Consistency Ratio (CR). The results of the calculation of the CR value will determine whether the weight and pairwise value calculations are valid or not. If CR value is greater than 0, 1, the process of determining the criteria pairwise and weight

calculation must be repeated again. Calculation of data on the criterion variable with AHP weight can be done if the CR value is less than 0.1. This calculation of the criteria and weight values will determine the final value of each alternative offered and then sorted from highest to lowest.

The ranking process of the alternatives using the AHP method began with determining criteria or variables based on the context of the problem. In this paper, the context to be resolved is to rank several areas in the city of Semarang that have been identified as groundwater recharge zones [1]. In this study, 8 criteria (variables) were taken as the basis for determining the ranking. The eight criteria are permeability, water level, slope, land use, rainfall, population density, acceptance, and knowledge. The criteria were then assigned weights as listed in Table 1. The process determining value for *pairwise comparison matrix* refers to the value of *pairwise*

comparison ranged only between 1 to expert who understand about the object to be studied. 9. Determination of the value of pairwise comparison was carried out by an

Table 1. Pairwise comparison matrix determination criteria

Criteria Comparison								
	Permeability	Water Level	Slope	Land Use	Rainfall	Population Density	Acceptance	Knowledge
Permeability (P)	1.00	0.20	0.20	0.20	3.00	0.14	3.00	3.00
Water Level (W)	5.00	1.00	0.20	0.20	3.00	3.00	5.00	5.00
Slope (S)	5.00	5.00	1.00	5.00	0.20	5.00	3.00	3.00
Land Use (L)	5.00	5.00	0.20	1.00	0.14	7.00	3.00	3.00
Rainfall	0.33	0.33	5.00	7.00	1.00	7.00	7.00	7.00
Population Density	7.00	0.33	0.20	0.14	0.14	1.00	0.20	0.20
Acceptance (A)	0.33	0.20	0.33	0.33	0.14	5.00	1.00	0.33
Knowledge (KP)	0.33	0.20	0.33	0.33	0.14	5.00	3.00	1.00
Total	24.00	12.27	7.47	14.21	7.77	33.14	25.20	22.53

After determining the value of *pairwise comparison*, the weights of the criteria were calculate, the weight of the criteria began with dividing the value of each pairwise comparison with the total values of each variable on these criteria. Table 2 presents the results of the calculation of the distribution of pairwise comparison values with the total value of

the *pairwise comparison*. The mean column in Table 2 shows the AHP weight value for each of the existing criteria. Before the AHP weight values used in subsequent calculations, the consistency of the weighting was tested in the calculation of pairwise comparison matrix. The weight of the resulting criteria can be used if the consistency ratio (CR) of less than 0.1.

Table 2. Calculation of the criteria weight value, CI value, and CR value.

	Permeability	Water Level	Slope	Land Use	Rainfall	Population Density	Acceptance	Knowledge	Total	Mean
Permeability (P)	0.04	0.02	0.03	0.01	0.39	0.00	0.12	0.13	0.74	0.09
Water Level (W)	0.21	0.08	0.03	0.01	0.39	0.09	0.20	0.22	1.23	0.15
Slope (S)	0.21	0.41	0.13	0.35	0.03	0.15	0.12	0.13	1.53	0.19
Land Use (L)	0.21	0.41	0.03	0.07	0.02	0.21	0.12	0.13	1.19	0.15
Rainfall	0.01	0.03	0.67	0.49	0.13	0.21	0.28	0.31	2.13	0.27
Population Density	0.29	0.03	0.03	0.01	0.02	0.03	0.01	0.01	0.42	0.05
Acceptance (A)	0.01	0.02	0.04	0.02	0.02	0.15	0.04	0.01	0.32	0.04
Knowledge (KP)	0.01	0.02	0.04	0.02	0.02	0.15	0.12	0.04	0.43	0.05

Through equation 1 and 2, the CI value is - 1.13, RI is 1.14, and CR is -0.99. With this CR value, the determination of Pair Wise is declared valid with a CR value <0.1.

$$CI = \frac{\lambda_{max} - n}{n} \quad (1)$$

CI is the Consistency Index, it is the maximum value of eigenvalue, and n is the number of variables.

$$CR = \frac{CI}{RC} \quad (2)$$

Where CR is the Consistency Ratio and RC is the Random Consistency value.

After getting the weight value, the next step is to use that weight in the ranking process on the alternatives, in this case, the area that is suitable for use as a groundwater recharge zone. In this paper, the data were obtained through observation. Table 3 shows the data of each variable that has undergone normalization using the min max formula.

Table 3. Normalized data using min max formula

Research Location	Permeability	Water Level	Slope	Land Use	Rainfall	Population Density	Acceptance	Knowledge
Wonoplumbon	0.014	0.583	0.500	0.500	0.000	0.016	0.575	0.522
Palir	0.129	0.365	1,000	0.500	1,000	0.025	0.500	0.143
Wonolopo	0.012	0.657	0.500	0.500	0.000	0.090	0.575	0.522
Gongorio	0.021	0.127	1,000	0.500	1,000	0.641	0.500	0.143
Perum BSB	0.019	0.588	0.500	0.500	0.000	0.000	0.575	0.522
Tambak Aji	0.017	0.064	0.500	0.500	1,000	0.342	0.500	0.143
Tumbu	0.132	0.318	1,000	0.500	0.000	0.045	0.575	0.522
Perum Sriwidodo	0.011	0.030	1,000	0.500	1,000	0.743	0.500	0.143
Perum Semarang Indah	0.184	0.004	0.000	0.000	0.737	0.217	0.552	0.250
Sekaran	0.567	0.409	1,000	1,000	0.000	0.092	0.000	0.857
Dorang	0.001	0.003	0.000	0.000	0.737	0.044	0.504	0.000
Perum Jangli Permai	0.011	0.000	1,000	0.000	0.737	0.666	0.685	0.857
Perum Muktiharjo	0.017	0.004	0.167	0.000	0.737	1,000	0.254	0.536
Sendang Guwo	0.009	0.003	0.167	0.000	0.737	0.611	0.254	0.536
Sendang Mulyo	0.017	0.152	0.000	0.000	0.737	0.155	0.685	0.857
Plamongan Indah	0.015	0.044	0.000	0.000	0.737	0.335	0.254	0.536
Kolangkaling	0.168	0.619	0.500	0.500	0.000	0.204	0.575	0.522
Gunungpati	1,000	0.790	1,000	1,000	0.000	0.075	0.000	0.857
Malon	0.146	1,000	1,000	1,000	0.000	0.075	0.000	0.857
Kalisegoro	0.161	0.610	1,000	1,000	0.000	0.031	0.000	0.857
Mangunsari	0.015	0.782	0.500	1,000	0.000	0.068	0.000	0.857
Patemon	0.124	0.597	0.500	1,000	0.000	0.068	0.000	0.857
Watusari	0.008	0.760	1,000	1,000	0.000	0.075	0.000	0.857
Karang Geneng	0.012	0.762	1,000	1,000	0.000	0.075	0.000	0.857
Perum Durian	0.018	0.541	1,000	1,000	0.000	0.570	1,000	1,000
Perum Grafika	0.018	0.704	1,000	1,000	0.000	0.251	1,000	1,000

Kampung Siroto	0.013	0.704	1,000	1,000	0.000	0.394	1,000	1,000
Perum Tusam	0.000	0.506	1,000	0.000	0.737	0.147	0.685	0.857

The calculation of the ranking process in areas that have been indicated was conducted by multiplying all normalized data (Table 3) by the weight of the criteria that have been obtained in the

weight calculation process based on Table 2 (mean column). The results of the calculation of each data and weight are presented in Table 4.

Table 4. Multiplication results and the criterion weight value

Research Location	Permeability	Water Level	Slope	Land Use	Rainfall	Population Density	Acceptance	Knowledge
Wonoplumbon	0.001	0.087	0.095	0.075	0	0.000 8	0.0229	0.026 1
Palir	0.012	0.055	0.19	0.075	0.27	0.0012	0.0199	0.0071
Wonolopo	0.001	0.098	0.095	0.075	0	0.0045	0.0229	0.026 1
Gongorio	0.002	0.019	0.19	0.075	0.27	0.032 1	0.0199	0.0071
Perum BSB	0.002	0.088	0.095	0.075	0	0	0.0229	0.026 1
Tambak Aji	0.001	0.009	0.095	0.075	0.27	0.017 1	0.0199	0.0071
Tumbu	0.012	0.04 8	0.19	0.075	0	0.0022	0.0229	0.026 1
Perum Sriwidodo	0.001	0.00 5	0.19	0.075	0.27	0.037 2	0.0199	0.0071
Perum Semarang Indah	0.016	0.00 1	0	0	0.199	0.0108	0.022 1	0.012 5
Sekaran	0.051	0.061	0.19	0.15	0	0.0046	0	0.042 9
Dorang	0.001	0.000 6	0	0	0.199	0.0022	0.020 2	0
Perum Jangli Permai	0.001	0	0.19	0	0.199	0.033 3	0.0274	0.042 9
Perum Muktiharjo	0.001	0.000 6	0.03 2	0	0.199	0.05	0.010 2	0.026 8
Sendang Guwo	0.001	0.0004	0.03 2	0	0.199	0.0305	0.010 2	0.026 8
Sendang Mulyo	0.001	0.02 3	0	0	0.199	0.0077	0.0274	0.042 9
Plamongan Indah	0.001	0.00 7	0	0	0.199	0.016 8	0.010 2	0.026 8
Kolangkaling	0.015	0.09 3	0.095	0.075	0	0.010 2	0.0229	0.026 1
Gunungpati	0.09	0.11 9	0.19	0.15	0	0.003 8	0	0.042 9
Malon	0.013	0.15	0.19	0.15	0	0.003 8	0	0.042 9
Kalisegoro	0.014	0.09 2	0.19	0.15	0	0.0015	0	0.042 9
Mangunsari	0.001	0.117	0.095	0.15	0	0.003 4	0	0.042 9
Patemon	0.011	0.089	0.095	0.15	0	0.0034	0	0.042 9
Watusari	0.001	0.11 2	0.19	0.15	0	0.0037	0	0.042 9
Karang Geneng	0.001	0.114	0.19	0.15	0	0.0037	0	0.042 9
Perum Durian	0.002	0.081	0.19	0.15	0	0.0285	0.04	0.05
Peum Grafika	0.002	0.10 6	0.19	0.15	0	0.012 6	0.04	0.05
Kampung Siroto	0.001	0.10 6	0.19	0.15	0	0.019 7	0.04	0.05
Perum Tusam	0	0.07 6	0.19	0	0.199	0.0073	0.0274	0.042 9

The final process of calculating these values was to add up each value horizontally according to the available object or alternative. The total number of values for each of these alternatives is the basis for determining the rating of each alternative. The final result of calculations using the AHP method was the priority ranking of the groundwater recharge development in the city of Semarang as contained in Table 5.

Results and Discussion. In this study, an order of priority development of groundwater recharge areas in the city of Semarang is shown in Table 5. The process of development of groundwater recharge area starts from the Palir village, Ngaliyan sub-district to Karang Geneng village, Gunungpati sub-district. Utilization of AHP in determining the priority of the alternatives used both regional geomorphological conditions and the readiness of the local community. In fact, now it is quite difficult in an urban area that has open area to be used as a groundwater recharge area. The results of this study are expected to provide an overview of the residential areas which geomorphologically have potential as groundwater recharge area and community preparedness. It is also expected that residential areas could be built permanently and maintain their functions as residential areas.

Table 5. The results of the ranking of groundwater recharge areas in the city of Semarang

No	Villages	Sub District	Score
1	Palir	Ngaliyan	0.629 6
2	Gondoriyo	Ngaliyan	0.615 1
3	PerumSriwidodo	Ngaliyan	0.604 8
4	Gunungpati	Gunungpa ti	0.595 1
5	Kampung Siroto	Banyuman ik	0.556 4
6	PerumGrafika	Banyuman ik	0.549 8
7	Malon	Gunungpa ti	0.549 7
8	PerumahanTusanTemb alang	Tembalan g	0.542 5
9	Perumahan Durian	Banyuman ik	0.541 3
10	KarangGeneng	Gunungpa ti	0.502 9

Table 5 shows that some areas has small value geomorphologically, which (0) in the normalized data but in the area is prioritized for the groundwater recharge development. The value of 0 in normalized data occurs because the data has a minimum value to other values on that criterion. Therefore, the value of 0 in this condition does not mean that the area does not have potential. The involvement of the data acceptance and knowledge on a region has a significant contribution in providing an assessment of the area feasibility for the groundwater recharge.

This section highlights the advantages of using the AHP method in determining a ranking process. However, this method also has some weaknesses. One of which is the result of the ranking process can be changed because it is based on values that are arranged in pairwise comparison matrix. These values determine the weight of each existing criterion. The process of drafting the values in the pairwise comparison matrix highly depends on the experts who justify those values. Therefore, if the pairwise comparison matrix composed by different experts could only produce different weights and can affect the final result ranking of the alternatives.

Conclusion. In the study resulted in 10 prioritized areas at the city of Semarang who qualifies groundwater recharge areas. These ten areas are not all open areas but there are also residential areas which is geomorphologically suitable as a groundwater recharge area. The result shows that the areas which have been geomorphologically identified and coupled with the knowledge and acceptance of the community towards a groundwater recharge area can allow them to have the potential as groundwater recharge areas. Through the application of appropriate governance and technology, it is possible for all identified areas to have potential as groundwater recharge areas to serve as water reserves in urban areas.

In contrast to previous research on the determination of groundwater recharge areas in Semarang which only determined locations, the results obtained from this research allows the gradual development on the identified areas. The results of this study can provide a priority scale for the development of groundwater recharge areas in the city of Semarang.

Нур Кудус^{1*}, Федди Сети Прибади², Мохамед Нор Ажари Азман³

¹Құрылыс бөлімі, Мемлекеттік Семаранг Университеті, Индонезия;

²Энергетика кафедрасы, Мемлекеттік Семаранг Университеті, Индонезия;

³Техникалық және кәсіптік факультеті, Султан Идрис Пендидикан Университеті, Перак, Малайзия.

E-mail: nurqudus@mail.unnes.ac.id

СЕМАРАНГ ҚАЛАСЫНДА ҚАЙТА ҚУАТТАНДЫРУ АЙМАҚТАРЫНЫҢ АРТЫҚШЫЛЫҒЫН АНЫҚТАУ ҮШІН АНР ӘДІСІН ҚОЛДАНУ

Аннотация: жер асты суларын толтыру аймағы ретінде белгілі бір аймақты таңдау аймақ дамуындағы басымдықты талап етеді. Жер асты суларымен қоректендіру аймағы қалалық жерде таза сумен жабдықтауды сақтауда маңызды рөл атқарады. Экологиялық залал салдарының бірі – жер асты суларының ықтимал қорларына зиян келтіру болғандықтан, бұл экологиялық залал жер пайдаланудың өзгеруіне, әсіресе жер асты сулары, тұрғын үй және өнеркәсіптік құрылыстар, сондай-ақ жер асты суларын бақылаусыз соруға байланысты. Егер бұл ұзақ уақытқа созылса, ол гидрологиялық цикл жүйесін бұзуы мүмкін, нәтижесінде жер асты суларының сапасы мен мөлшері, су тасқыны, эрозия және көшкін, теңіз суының басу қатері туындауы мүмкін. Сондықтан жер асты суларының қорын толтыру үшін белгілі бір аймақты таңдау – аймақ дамуының басындығын талап етеді. Жер асты суларымен қоректендіру аймағы қалалық жерде таза сумен жабдықтауды сақтауда маңызды рөл атқарады. Әсіресе, тұрғын үй және өнеркәсіптік аудандарға айналған жерді пайдаланудағы өзгерістер жағынан қала аумағы тез дамитындықтан аумаққа жатады. Осы жұмыста Аналитикалық иерархия үдеріс әдісі (АНР–Analytical Hierarchy Process) Семаранг қаласындағы су жинау алаңын дамытудың басым ауқымын анықтау үшін қолданылды. АНР әдісі бір уақытта көптеген өлшемдері бар деректерді талдау үшін қолданылды, осылайша, ол аймақты анықтау үшін қолданылатын айнымалылардағы мәліметтерге негізделеді. Талдау нәтижелері жер асты суларының қорын толықтыру және оларды саралау үшін 10 басым бағыт бере алады, оны біртіндеп Семаранг қаласындағы су жинау бассейндері ретінде жасауға болады.

Түйін сөздер: АНР әдісі, су қорын толтыру аймағы, басымдық шкаласы, рейтинг.

Нур Кудус^{1*}, Федди Сети Прибади², Мохамед Нор Ажари Азман³

¹Департамент гражданского строительства, Государственный университет Семаранга, Индонезия;

²Департамент электротехники, Государственный университет Семаранга, Индонезия;

³Технический и профессиональный факультет,

Университет Пендидикан им. Султан Идрис, Малайзия.

E-mail: nurqudus@mail.unnes.ac.id

ВНЕДРЕНИЕ МЕТОДА АНР ДЛЯ ОПРЕДЕЛЕНИЯ ПРИОРИТЕТА ДОПОЛНИТЕЛЬНЫХ ЗОН В ГОРОДЕ СЕМАРАНГ

Аннотация: выбор определенного региона для пополнения запасов подземных вод требует приоритета развития региона. Зона пополнения запасов подземных вод играет важную роль в поддержании чистой воды в городских районах. Одним из последствий экологического ущерба является ущерб потенциалу запасов грунтовых вод. Этот экологический ущерб вызван изменениями в землепользовании, особенно в районах пополнения запасов подземных вод, жилой и промышленной застройки, а также неконтролируемой откачки грунтовых вод. Если это происходит в течение длительного периода, это может нарушить систему гидрологического цикла, что приведет к снижению качества и количества грунтовых вод, наводнениям, эрозии и оползням, а также вторжению морской воды. Следовательно, выбор определенного региона в качестве территории для пополнения запасов подземных вод требует приоритета развития региона. Зона пополнения запасов подземных вод играет важную роль в поддержании чистой воды в городских районах. Городская территория – это область, которая быстро развивается, особенно изменения в землепользовании, которые превратились в жилые и промышленные районы. В этом обсуждении метод Аналитического Иерархического Процесса (АНР –Analytical Hierarchy Process) был использован для определения приоритетного масштаба развития зоны охвата в городе Семаранг. Метод АНР использовался для одновременного анализа данных, которые имеют множество измерений, так что он основан на данных, содержащихся в переменных,

используемых при идентификации области. По результатам анализа можно получить 10 приоритетных областей для пополнения запасов подземных вод и их ранжирование, которые можно постепенно развивать в качестве водосборных территорий в городе Семаранг.

Ключевые слова: метод АНР, область водоснабжения, шкала приоритетов, рейтинг.

Information about the author:

Nur Qudus – Department of Civil Engineering, Universitas Negeri Semarang, Indonesia. E-mail: nurqudus@mail.unnes.ac.id; Orcid ID: <https://orcid.org/0000-0003-4021-5391>;

Feddy Setio Pribadi – Department of Electrical Engineering, Universitas Negeri Semarang, Indonesia. E-mail: feddy.setio@mail.unnes.ac.id; Orcid ID: <https://orcid.org/0000-0002-3394-7394>;

Mohamed Nor Azhari Azman – Ph.D in Geomatic Engineering, Associate Professor of the Department of Engineering Technology, Faculty of Technical and Vocational, Universiti Pendidikan Sultan Idris, Tanjung Malim, Perak, Malaysia; E-mail: mnazhari@ftv.upsi.edu.my; Orcid ID: <https://orcid.org/0000-0003-1756-1990>.

REFERENCES

[1] Qudus N., Sunjoto D., Luknanto, Sudibyakto. (2016) Rainwater Catchment System as Groundwater Recharge in Semarang City Residential Area, *International Journal of Ecology & Development*, vol. 31, no. 3, pp. 29-41.

[2] Sa'ud I. (2012) Using the Analytic Hierarchy Process (AHP) Method to Assess Alternatives of Infiltration Well, Long Storage, and Water Storage as Flood Control in Surabaya, *Journal of Applications*, vol. 10, no. 2, pp. 69-80.

[3] Karthick P, Lakshumanan C. (2018) Identification of groundwater recharge sites and suitable recharge structure for Thuraiyur taluk using Geospatial technology, *Indian Journal of Geo Marine Sciences*, vol. 47, no. 10, pp. 2117-2125.

[4] Boufekane A., Meddi H., Meddi M. (2020) Delineation of groundwater recharge zones in the mitidja plain, north algeria, using multi-criteria analysis, *Journal of Hydroinformatics*, pp. 1468-1484.

[5] Deeksha, Khalkho D. (2015) Identification of appropriate location for artificial groundwater recharging using geospatial technique in bilaspur district, *International Journal of Engineering Research & Technology*, vol. 4, no. 9, pp. 65-70.

[6] Anjasmoro B, Suharyanto, Sangkawati S. (2015) Analysis of Embung Development Priorities using Cluster Analysis Method, AHP and Weighted Average (Analysis of Embung Development Priorities using Cluster Analysis Method, AHP and Weighted Average, *Journal of Science and Applied Civil Engineering*, vol. 21, no.2, pp. 101-112.

[7] Raviraj A., Kuruppath N., Kannan B. (2017) Identification of Potential Grounwater Recharge Zones Using Remote Sensing and Geographical Information System in Amaravathy Basin, *Jornal of Remote Sensing & GIS*, vol. 6, no. 4, pp. 1-10.

[8] Dar T., Rai N., Bhat A. (2020) Delineation of potential groundwater recharge zones using analytical hierarchy process, *Geology, Ecology, and Landscapes*, pp. 1-16.

[9] Tiwari A.K, Lavy M., Amanzio G., Maio M.D., Signh P.K., Mahato M.K. (2017) Identification of Artificial Grounwater Recharging Zone Using a GIS-based Fuzzy Logic Approach: A Case Study in A Coal Mine Area of the Damodar Valley, India, *Applied Water Science*, vol. 7, pp. 4513-4524.

[10] Gesim N.A, Okazaki T. (2018) Identification of Groundwater Artificial Recharge Sites in Herat City, Afghanistan, using Fuzzy Logic, *International Journal of Engineering and Technical Research*, vol. 8, no. 2, pp. 40-45.

[11] Saaty T.L. (2008) Decision making with the analytic hierarchy process, *International Journal Services Sciences*, vol. 1, no. 1, pp. 83-98.

[12] Deeksha, Khalkho D. (2015) Identification of Appropriate Location for Artificial Groundwater Recharging using Geospatial Technique in Bilaspur District, *International Journal of Engineering Research & Technology*, vol. 4, no. 9, pp. 65-70.

[13] Sayl K., Adham A., Ritsema CJ. (2020) A GIS-Based Multicriteria Analysis in Modeling Optimum Sites for Rainwater Harvesting, *Hydrology*, vol. 7, no. 51, pp. 1-14.

[14] Raviraj A, Kuruppath N, Kannan B. (2017) Identification of Potential Groundwater Recharge Zones Using Remote Sensing and Geographical Information System in Amaravathy Basin, *Journal of Remote Sensing & GIS*, vol. 6, no. 4, pp. 1-10.

[15] Hidayat D.P.A. (2020) Analysis of the Application of the Analytic Hierarchy Process (AHP) Method in the Determination of Catchments in the Upper Cisadane Sub-watershed, Journal of civil mechanical construction engineering (JRKMS), vol. 3, no. 2, pp. 81-87.

[16] Osipov S. V., Livinsky Yu. N., Ermenbay A. M., Zafar Gafurov. (2019) Change of Formation Conditions of Groundwater of Kazakhstan Under the Influence of Anthropogenic Changes of the Environment, News of the National Academy of Sciences of the Republic of Kazakhstan, Series of Geology and Technical Sciences, vol. 3, no. 435, pp. 36 – 41.

[17] Y.Z. Murtazin, O. L. Miroshnichenko L.Y. Trushel. (2019) Structure of Geoinformational and Analytical System “Groundwater Resources and Reserves of the Republic of Kazakhstan, News of the National Academy of Sciences of the Republic of Kazakhstan, Series of Geology and Technical Sciences, vol.3, no. 435, pp. 21 – 29.

[18] Murtazin Y. Z., Miroshnichenko O. L., Trushel L. Y., Smolyar, V. A., & Mirlas, V. M. (2020) Creation of Computer Models of the Maps of Groundwater Availability in Kazakhstan, News of the National Academy of Sciences of the Republic of Kazakhstan, Series of Geology and Technical Sciences, vol. 2, no. 440, pp. 114 – 122.

[19] Kenzhaliyev B., Yesimova D.M., Surkova T.Y., Soemowidagdo A., Amanzholova L.U., Egorov, N.B. (2020). Transformation of the rare earth elements and impurity elements combinations in the course of pH pregnant solution modification, News of the National Academy of Sciences of the Republic of Kazakhstan, Series of Geology and Technical Sciences, 2 (440), p. 87-95. <https://doi.org/10.32014/2020.2518-170X.35>.

[20] Myrzaliev S.K., Pratama G.N.I.P., Khamidulla A.G. Wastewater treatment using natural zeolite materials. Kompleksnoe Ispol'zovanie Mineral'nogo Syr'a = Complex Use of Mineral Resources = Mineraldik Shikisattardy Keshendi Paidalanu. - 2021. № 2 (317), pp. 64-68. <https://doi.org/10.31643/2021/6445.19>.

МАЗМҰНЫ-СОДЕРЖАНИЕ-CONTENTS

Akhmetov S.M., Akhmetov N.M., Zaidemova Zh.K., Iklasova Zh.U., Ikhsanov E.U. PERFORMANCE OF GROUND CHAIN DRIVES OF ROD PUMP UNITS FOR HIGH-VISCOSITY OIL EXTRACTION.....	6
Gladyshev S.V., Abdulvaliyev R.A., Imangalieva L.M., Zaihidee Fardila M., Manapova A.I. PROCESSING OF INDUSTRIAL PRODUCTS WHEN DISPOSING OF COPPER ELECTRO-REFINING SOLUTIONS.....	15
Hendri Pratama, Mohamed Nor Azhari Azman, Olzhas B. Kenzhaliyev, Hendra Wijaya, Gulzhaina K. Kassymova APPLICATION OF AUGMENTED REALITY TECHNOLOGY AS AN INTERACTIVE LEARNING MEDIUM IN GEOGRAPHY SUBJECTS.....	21
Imashev A.Zh., Sudarikov A.E., Musin A.A., Suimbayeva A.M., Asan S.Yu. IMPROVING THE QUALITY OF BLASTING INDICATORS BY STUDYING THE NATURAL STRESS FIELD AND THE IMPACT OF THE BLAST FORCE ON THE ROCK MASS.....	30
Khairullayev N.B., Aliev S.B., Aben Y.Kh., Uisimbek A.A. STUDY OF THE EFFECT OF SOLUTION ACTIVATION ON THE DENSITY OF THE PREGNANT SOLUTION AND ON THE CONTENT OF THE USEFUL COMPONENT.....	36
Kenesbayeva A., Nurpeisova M., Levin E. MODELING OF GEODYNAMIC PROCESSES AT HYDROCARBON DEPOSIT.....	42
Moldabayeva G.Zh., Suleimenova R.T., Bimagambetov K.B., Logvinenko A., Tuzelbayeva S.R. EXPERIMENTAL STUDIES OF CHEMICAL AND TECHNOLOGICAL CHARACTERISTICS OF CROSS-LINKED POLYMER SYSTEMS APPLIED IN FLOW-DIVERSION TECHNOLOGIES.....	50
Mustafayev Zh.S., Sagayev A.A., Alimbayev Ye.N., Pchelkin V.V. HYDROLOGICAL PROFILE OF LOWS OF THE SYRDARYA RIVER UNDER CONDITIONS OF «HARD» ANTHROPOGENIC ACTIVITIES.....	59
Nur Qudus, Feddy Setio Pribadi, Mohamed Nor Azhari Azman IMPLEMENTATION OF THE AHP METHOD TO DETERMINE THE PRIORITY OF RECHARGE AREAS IN THE SEMARANG CITY.....	66
Rakhadilov B.K., Satbayeva Z.A., Wieleba W., Kylyshkanov M.K., Bayzhan D.R. CHANGES IN STRUCTURE AND PROPERTIES OF STRUCTURAL CHROMONICKEL STEELS AFTER PLASMA ELECTROLYTE HARDENING.....	76
Taskinbayev K.M., Pankratov V.F., Obryadchikov O.S., Nyssanova A.S. UNCOMMON OIL FIELD AKZHAR VOSTOCHNY: ANOTHER VERSION OF THE STRUCTURE AND OIL AND GAS CONTENT.....	83
Turgumbayev J.J., Turgunbayev M.S. PREDICTING THE RESISTANCE FORCE OF HOMOGENEOUS GROUND TO CUTTING.....	91
Umarbekova Z.T., Dyusembayeva K.Sh., Ozdoev S.M., Gadeev R.R. THE BAKYRSHIK DEPOSIT'S GOLD MINERALISATION PROSPECTING MODEL.....	99

Sherov A.K., Sherov K.T., Sikhimbayev M.R., Absadykov B.N., Kuanov I.S. RESEARCH OF QUALITATIVE INDICATORS OF A GEAR PUMP WITH TWO-SHAFT CONNECTION FOR PUMPING PETROLEUM PRODUCTS.....	108
Zhakupov A.A., Dzhangel'din D.I., Omarkozhayeva A.N., Mizambekova J.K., Petr Hajek GEO-ECOLOGIZATION OF TOURISM AS A FACTOR OF SUSTAINABLE DEVELOPMENT OF TOURISM REGIONS.....	117
Mashrapova M.A., Zholtayev G.Zh., Abdeli D.Zh., Ozdoyev S.M., Togizov K.S. IMPROVEMENT OF HYDRAULIC FACING METHOD TO INCREASE WELLS PRODUCTIVITY.....	124
Zhaparkulova E.D., Amanbayeva B.Sh., Dzhaisambekova R.A., Mirdadayev M.S., Mosiej J. GEOLOGICAL STRUCTURE OF SOILS AND METHODS OF WATER RESOURCES MANAGEMENT OF THE ASA RIVER.....	130

**Publication Ethics and Publication Malpractice
in the journals of the National Academy of Sciences of the Republic of Kazakhstan**

For information on Ethics in publishing and Ethical guidelines for journal publication see <http://www.elsevier.com/publishingethics> and <http://www.elsevier.com/journal-authors/ethics>.

Submission of an article to the National Academy of Sciences of the Republic of Kazakhstan implies that the described work has not been published previously (except in the form of an abstract or as part of a published lecture or academic thesis or as an electronic preprint, see <http://www.elsevier.com/postingpolicy>), that it is not under consideration for publication elsewhere, that its publication is approved by all authors and tacitly or explicitly by the responsible authorities where the work was carried out, and that, if accepted, it will not be published elsewhere in the same form, in English or in any other language, including electronically without the written consent of the copyright-holder. In particular, translations into English of papers already published in another language are not accepted.

No other forms of scientific misconduct are allowed, such as plagiarism, falsification, fraudulent data, incorrect interpretation of other works, incorrect citations, etc. The National Academy of Sciences of the Republic of Kazakhstan follows the Code of Conduct of the Committee on Publication Ethics (COPE), and follows the COPE Flowcharts for Resolving Cases of Suspected Misconduct (http://publicationethics.org/files/u2/New_Code.pdf). To verify originality, your article may be checked by the Cross Check originality detection service <http://www.elsevier.com/editors/plagdetect>.

The authors are obliged to participate in peer review process and be ready to provide corrections, clarifications, retractions and apologies when needed. All authors of a paper should have significantly contributed to the research.

The reviewers should provide objective judgments and should point out relevant published works which are not yet cited. Reviewed articles should be treated confidentially. The reviewers will be chosen in such a way that there is no conflict of interests with respect to the research, the authors and/or the research funders.

The editors have complete responsibility and authority to reject or accept a paper, and they will only accept a paper when reasonably certain. They will preserve anonymity of reviewers and promote publication of corrections, clarifications, retractions and apologies when needed. The acceptance of a paper automatically implies the copyright transfer to the National Academy of Sciences of the Republic of Kazakhstan.

The Editorial Board of the National Academy of Sciences of the Republic of Kazakhstan will monitor and safeguard publishing ethics.

Правила оформления статьи для публикации в журнале смотреть на сайтах:

[www:nauka-nanrk.kz](http://www.nauka-nanrk.kz)

<http://www.geolog-technical.kz/index.php/en/>

**ISSN 2518-170X (Online),
ISSN 2224-5278 (Print)**

Редакторы: *М.С. Ахметова, А. Ботанқызы, Д.С. Аленов, Р.Ж. Мрзабаева*
Верстка на компьютере *В.С. Зикирбаева*

Подписано в печать 15.08.2021.
Формат 60x881/8. Бумага офсетная. Печать – ризограф.
4,6 п.л. Тираж 300. Заказ 4.